

Nr. 5 „Lustig und fidel“ Polka

von Emil Blasberg (1861-1934)

Musical score for the first system of the piece. It consists of eight staves for different instruments: Klarinette in Es, Klarinette 1 in B, Cornett 1 in B, Cornett 2 in B, Tenorhorn 1, Tenorhorn 2/3, Posaune, and Tuba. The music is in 2/4 time and begins with a piano (*p*) dynamic. The score concludes with a double bar line and the word "Fine".

Musical score for the second system of the piece, starting at measure 9. It consists of eight staves for different instruments: Es Kl., Kl. 1, Cor. 1, Cor. 2, Tenh. 1, Tenh. 2/3, Pos., and Tuba. The music is in 2/4 time and begins with a forte (*f*) dynamic. The score concludes with a double bar line.

18

Es Kl.
Kl. 1
Cor. 1
Cor. 2
Tenh. 1
Tenh. 2/3
Pos.
Tuba

Da capo al Fine
-> Trio



26

Trio

Es Kl.
Kl. 1
Cor. 1
Cor. 2
Tenh. 1
Tenh. 2/3
Pos.
Tuba

p
p
p
p
p
p

33

Es Kl.
Kl. 1
Cor. 1
Cor. 2
Tenh. 1
Tenh. 2/3
Pos.
Tuba

f

Detailed description: This musical score block covers measures 33 through 38. It features eight staves for different instruments: Es Kl. (E-flat Clarinet), Kl. 1 (Clarinet 1), Cor. 1 (Coronet), Cor. 2 (Coronet), Tenh. 1 (Trumpet 1), Tenh. 2/3 (Trumpets 2 and 3), Pos. (Baritone), and Tuba. The music is in a key with two flats and a 2/4 time signature. Measures 33-35 show melodic lines for most instruments, while Tenh. 2/3 and Pos. play chords. Measures 36-38 feature a crescendo leading to a fortissimo (*f*) dynamic. The Tuba part consists of a steady eighth-note accompaniment.

39

Es Kl.
Kl. 1
Cor. 1
Cor. 2
Tenh. 1
Tenh. 2/3
Pos.
Tuba

Detailed description: This musical score block covers measures 39 through 44. It features the same eight instruments as the previous block. The music continues in the same key and time signature. Measures 39-41 show melodic lines for most instruments, while Tenh. 2/3 and Pos. play chords. Measures 42-44 feature a crescendo leading to a fortissimo (*f*) dynamic. The Tuba part consists of a steady eighth-note accompaniment.



Nr. 5, „Lustig und fidel“ Polka

von Emil Blasberg (1861-1934)



Cornett 1 in B

Nr. 5, „Lustig und fidel“ Polka

von Emil Blasberg (1861-1934)



Tenorhorn 1

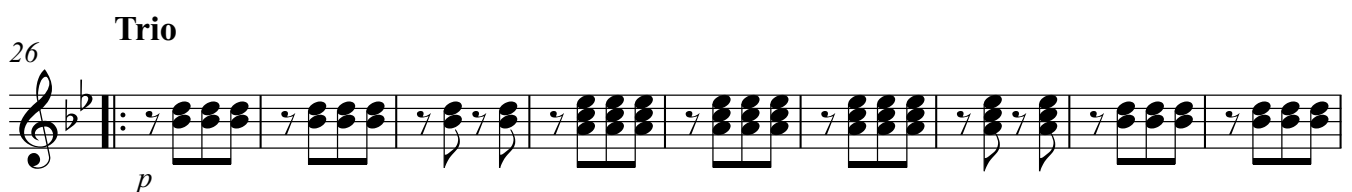
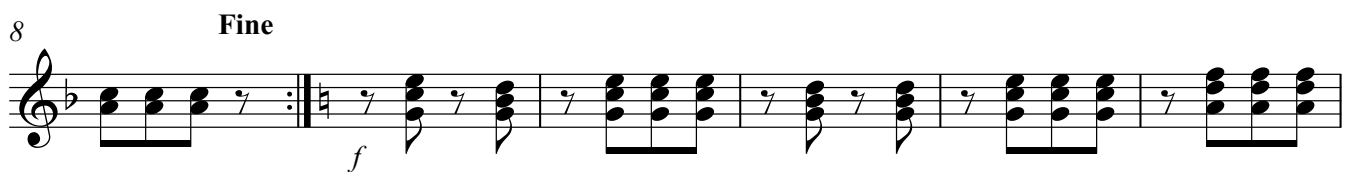
Nr. 5, „Lustig und fidel“ Polka

von Emil Blasberg (1861-1934)



Nr. 5, „Lustig und fidel“ Polka

von Emil Blasberg (1861-1934)



Posaune

Nr. 5, „Lustig und fidel” Polka

von Emil Blasberg (1861-1934)

1

p

Measures 1-6: Bass clef, 2/4 time, key of B-flat major. The melody consists of quarter notes with slurs and rests.

7

Fine

f

Measures 7-12: Bass clef, 2/4 time, key of B-flat major. Measure 7 starts with a forte dynamic. The piece ends with a double bar line and repeat dots.

13

Measures 13-19: Bass clef, 2/4 time, key of B-flat major. The melody continues with quarter notes and slurs.

20

Da capo al Fine
-> Trio

Measures 20-25: Bass clef, 2/4 time, key of B-flat major. Measure 20 starts with a forte dynamic. The piece ends with a double bar line and repeat dots.

26

Trio

p

Measures 26-34: Bass clef, 2/4 time, key of B-flat major. Measure 26 starts with a piano dynamic. The piece ends with a double bar line and repeat dots.

35

f

Measures 35-40: Bass clef, 2/4 time, key of B-flat major. Measure 35 starts with a forte dynamic. The piece ends with a double bar line and repeat dots.

41

Measures 41-46: Bass clef, 2/4 time, key of B-flat major. The piece ends with a double bar line and repeat dots.

Posaune

Nr. 5, „Lustig und fidel” Polka

von Emil Blasberg (1861-1934)

1

p

7

Fine

f

13

20

Da capo al Fine
-> Trio

26

Trio

p

35

f

41

Tuba

Nr. 5 „Lustig und fidel“ Polka

von Emil Blasberg (1861-1934)

